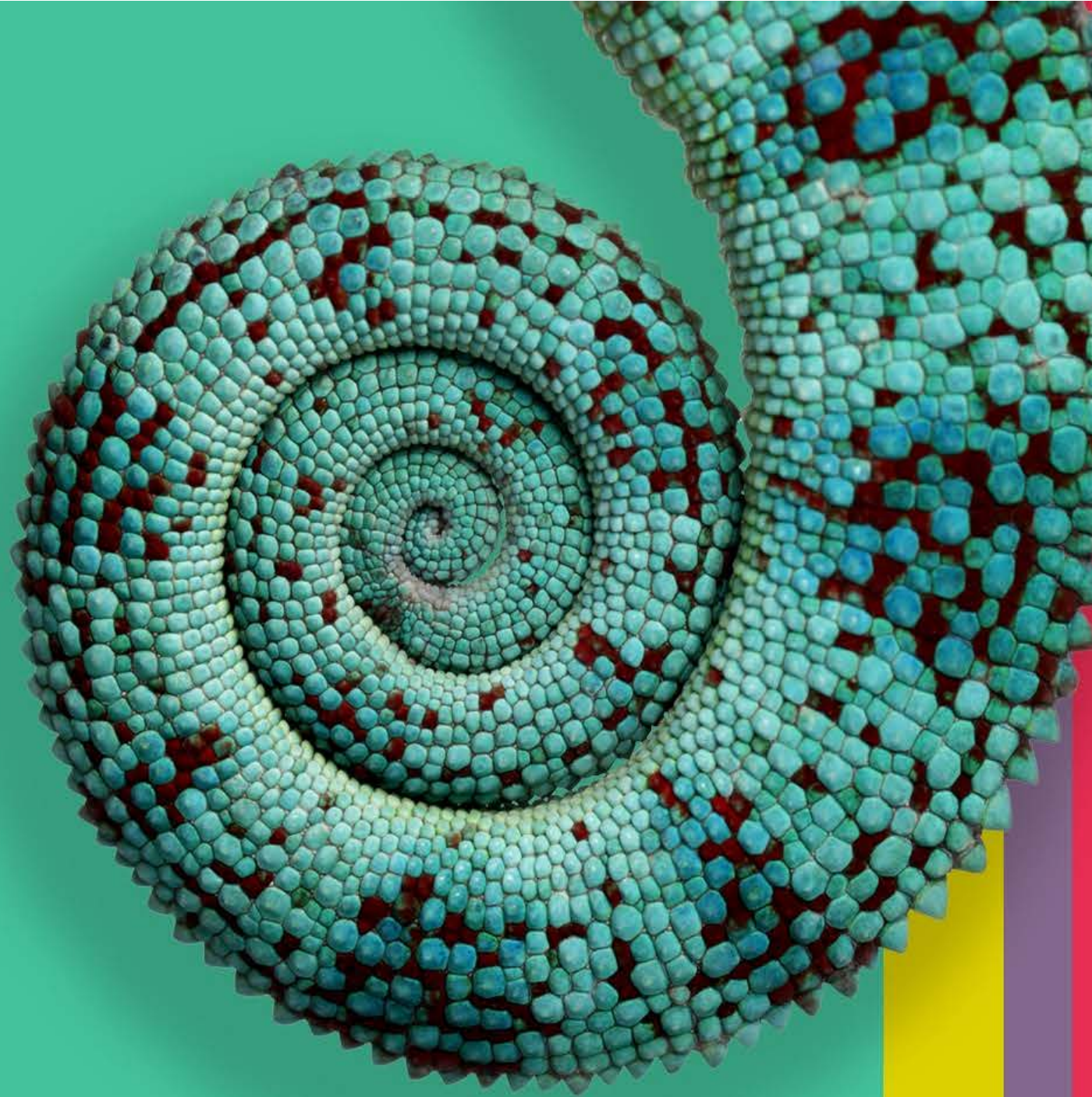


# Serengeti

Data & Tech Sheet



# Is it impossible to find software engineers?

**The software development industry is in a tight hiring spot. We know that stable and skilled engineering teams build exceptional products. However, finding the people you need isn't easy, and it's a time and cost investment.**

If you hire the wrong engineers -- or fail to hire them at all -- you can lose months on a business-critical project - and the standard hiring process does not always get you the best engineers.

More importantly the competition is also looking for these experts. Additionally, there are numerous business models today. Each leader has their own experiences, and those experiences inform their approach.

The biz world is moving faster than ever. Organizations pivot on a dime. Requirements are always changing. R&D needs more flexibility and agility.

We've never lived in a time like this.

In the EU, the vast majority of all enterprise software development comes from external partners and their engineers. To excel now, you need a great engineering team. Your innovation often comes right from that team.

That is the reason why we used more than 10 years of experience in offsite software delivery and built our team extension engagement model. It is a model that assures instant engineering capacity and flexibility, but it is specially designed to provide shortest time to maximum productivity, team stability and minimum management overhead.

**Serengeti is a software development business focused on core product development.**

# Serengeti's engineering team

We provide self-managed engineering teams to rapidly scale product development capacity and accelerate the release of products.

With our focus on industries like logistics, energy, health, industrial manufacturing, and finance, we provide teams that understand specific industry requirements and understand the broad business picture.

We have development centers in Croatia, Serbia and Nairobi.

We enable seamless team extension by mirroring the processes and development environment of our demanding clients.

Our global team of over 150 engineers are adept in all major technology platforms and possess unique development skills and real-world experience.

Today, our business continues to expand rapidly. We maintain 100% reference ability by meeting and often exceeding our clients high level of expectations.

Since our client need us for critical support in the development of their complex core business applications, our teams consist of very experienced and highly educated engineers.

With our broad technical expertise, we can consult and implement innovations based on advanced trends:

- **Cloud**
- **IoT**
- **Machine learning**
- **Legacy Modernization**
- **Automated Testing**
- **DevOps**
- **Computer vision**
- **Augmented reality**

# Serengeti's engineering team

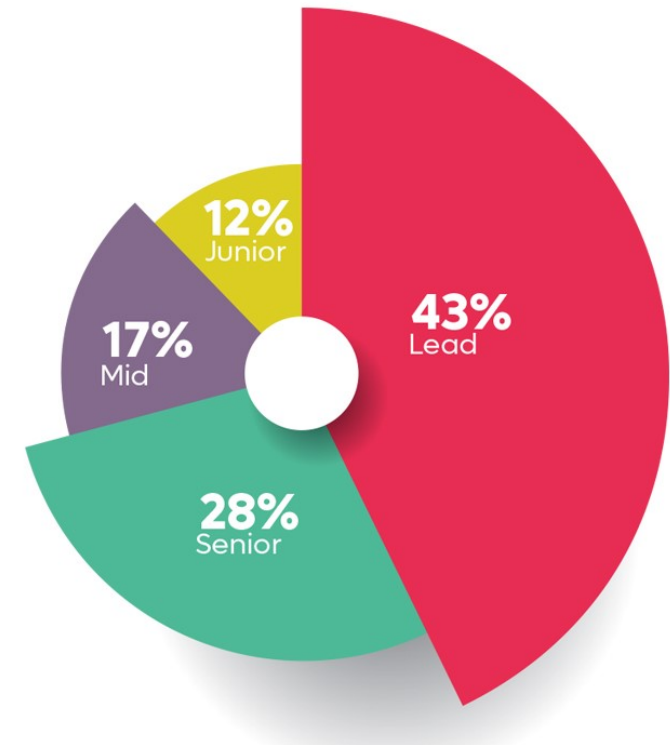
|

**150+** engineers

**300+** successful projects

**300+** certificates

## Breakdown of Serengeti software engineers by seniority level

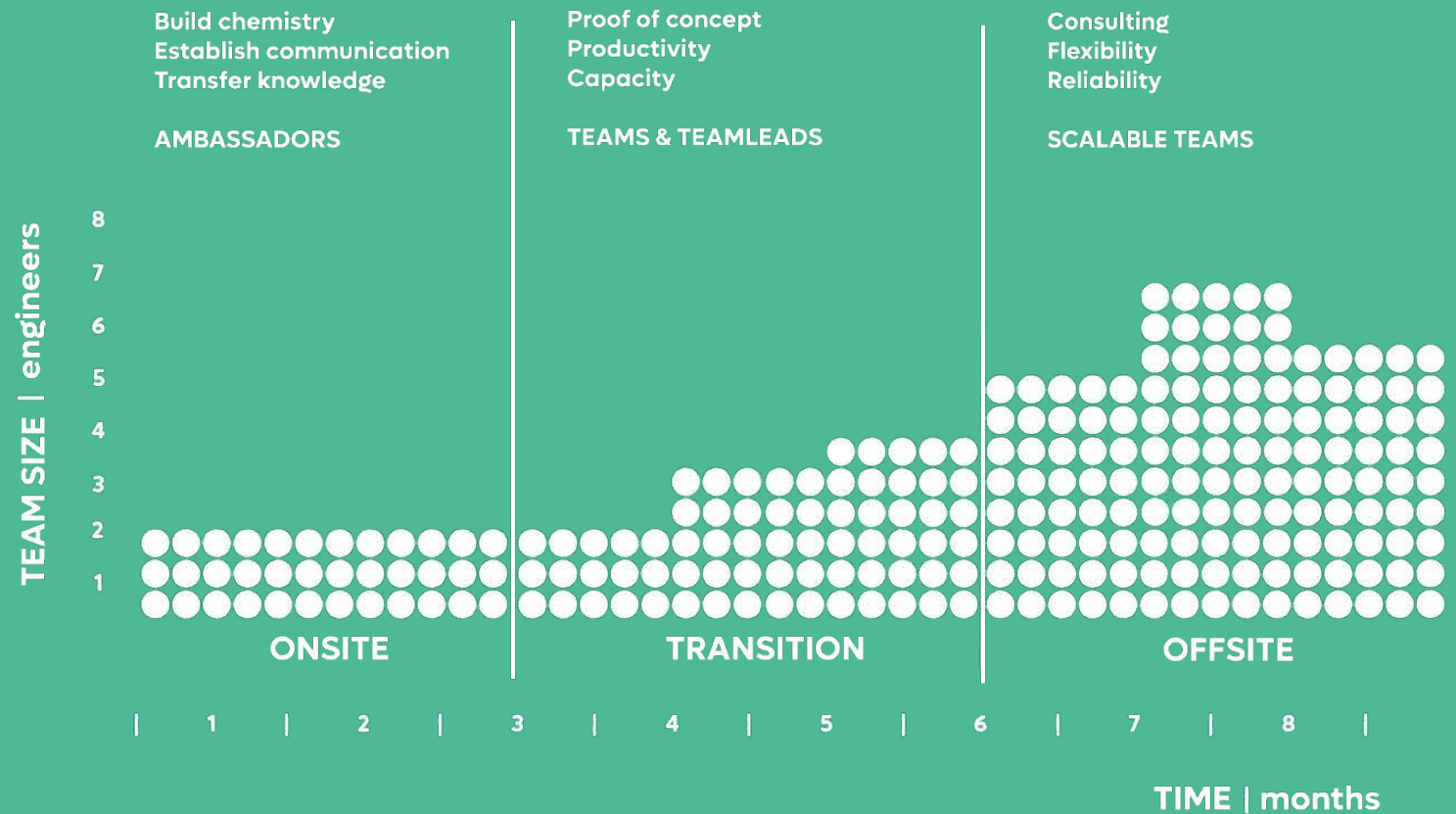




# Team Extension Model

In the Team Extension Model, Serengeti is a supplier responsible for maintaining a stable offsite development team that seamlessly integrates with the client's internal engineering team.

Serengeti is responsible for managing the remote team and delivering according to the client's roadmap, product requirements, and timeline.



# Why the Team Extension Model is the right approach

**The Team Extension Model is generally considered the most successful approach for achieving long-term, win-win outsourcing relationships for core software product development.**

In this model, the supplier maintains a dedicated core team that emulates an engineering center owned by the client. Its advantages are scalability and flexibility in team size, composition and skill set, as well as the added focus of team management experienced in similar engagements.

Supplier management experience is critical to ensure efficient and effective ramp-up, minimum client management overhead and maintenance of the high level of communication required for a high-trust collaborative environment.

**Once activated, the Team Extension Model is agile, efficient, and scalable.**

Basically, we become your offsite team.

We become your trusted partner.

Once the Team Extension Model is in place; it is perfectly complemented by supplier consulting capabilities -- where the client can benefit from suppliers' broad technical and business experience.



# Our Client's Feedback on Team Extension Model



*"The best part of working with Serengeti is agility and ability to react to any unplanned challenges. Having resources who provide swift resolutions and move the product forward makes us comfortable with whatever the future brings."*

**Mirko Gudelj, Director of Business Technology at PROTEL**

*"Serengeti has proved to be reliable partner with deep expertise in DevOps area. They helped us to modernise our development process and speed up testing and delivery of new releases."*

**Cristoph Balzer, Head of Software Engineering at Swissphone**

*"With new requirements, challenges, opportunities, rapid technology development we looked for additional knowledge and experience outside, to complement and modernize our products & solutions to deliver best possible customer experience. We have found Serengeti, a team, which consists of highly knowledgeable and reliable individuals who are always ready for any challenge at any time."*

**Matej Stipič, Head of Atlas Department at Epilog d.o.o.**

*"In 2016 we were looking to employ several software engineers but without a lot of success. At that time, we met Serengeti but I was sceptical if nearshoring can be a valid option for us (remote team, communication in English). Today, I know it was the right decision! Meanwhile, our Serengeti team grew and became a valuable extension to our own teams."*

**audifon GmbH, Hartmut Richter, Head of R&D at AUDIFON GMBH**

*"Each year we have to deliver between 4 and 8 large software projects to our customers. Therefore, scalability and flexibility in R&D is one of our biggest challenges. High performing teams and mature Team Extension engagement model from Serengeti helps us for many years to master this challenge."*

**Manfred Weiß, Head of Project Development at KNAPP System integration GmbH**

# How the Team Extension Model helps specifically with core product development?



You can add engineers and keep your internal processes. Everyone working on your product should be using the same processes, tools and quality standards.

**If you have a flat organization, increasing headcount creates an additional internal difficulty for management. Team Extension model provides self – managed autonomous teams.**

Due to the sheer number of engineers on staff, Team Extension suppliers have more depth in established and emerging technologies than in-house teams -- and they also have more exposure to engineering best practices across various client engagements.

Think of it like this: they often already cooperate with other market-leading companies and they know very well what are engineering best-practices that others are using. That's big.

Their consulting capability is precious. Suppliers that offer Team Extension Model have fewer distractions from internal politics, leading to higher productivity. They are also capable of looking at things from a different angle and coming with fresh ideas for problem-solving.



# Limitations and Challenges

If gaps in the work require core teams to be dissolved and re-established, much of the learning and scalability benefits are lost.

A core team of engineers must always be maintained for Team Extension Model to deliver maximum effectiveness.

Likewise, if the anticipated duration of the engagement is too short, there is less time for the client to benefit from the alignment and knowledge transfer that is achieved during the engagement ramp-up phase.

We help you find the right mix to get your core products upgraded or in-market. We do it faster, more effectively, and more productively than an internal team can do alone.

**If the supplier team is kept too small by the client (<5), then they may not leverage the full benefits of supplier management.**



# Our Product - FIYU

FIYU is the turn-key tool for Rapid Application Development that covers it all – backend and frontend.

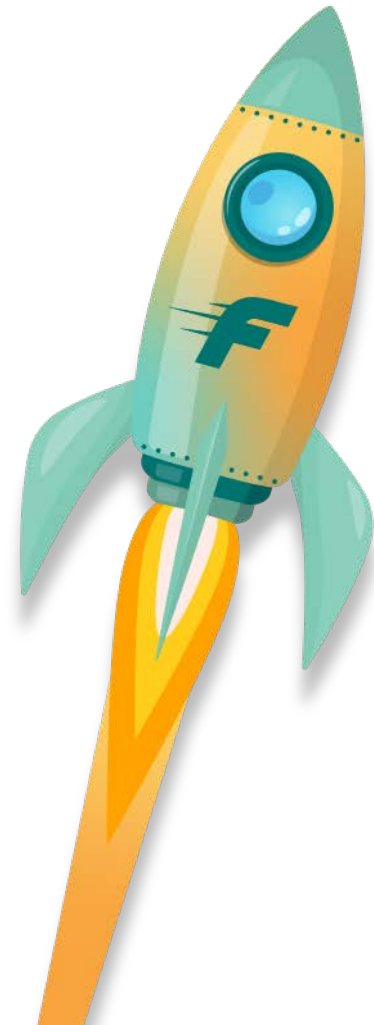
FIYU is a cloud native rapid application development platform with predefined boilerplate modules that can be used for modernizing existing applications and for accelerated development of new applications.

The bottom line is maximizing profit by making development cycles as short as possible. And that is the purpose of FIYU.

With FIYU, any organization can build applications faster, which makes FIYU perfect for projects that need to be completed as quickly as possible.

No matter if you are a big enterprise with a radical idea of how to reshape your existing processes to make them more efficient, or if you are a small startup with a revolutionary idea for a new product which might change the world, using FIYU as a starting point can help you maximize profit, and your projects are more likely to be delivered on time.

**FIYU, is a platform that enables you to get your software developed in up to 80% less time.**



# About Serengeti

**Serengeti is an international software development nearshoring and consulting company.**

It was founded in 2007 and has been continuously growing revenue, employee count, and level of expertise.

Because of our distinctive engagement model, we have become a valued partner for companies in the financial, logistics, energy, healthcare, and industrial manufacturing.

Our top priority is to provide professional services that exceed the expectations of what our clients imagine could be possible with outsourced engineering.

Teamwork is one of our core capabilities -- both between Serengeti engineers and between our engineers and your engineers. We select and foster those unique individuals with strong talent, great attitude, and energy, and ensure that they will always work well within a team.

More than 60% of our newly recruited engineers come to us via internal references while we hire the rest of engineers after a rigorous selection process, where the job is offered only to 15% of candidates.

Although recruiting talented software engineers is challenge everywhere in the world, Serengeti uses its exceptional employer brand to attract a large number of good candidates.

# Areas of Expertise



IoT



Artificial  
Intelligence



Cloud  
Applications



Microservices



Legacy  
Modernization



Augmented  
Reality



Robotics

# | Verticals



Healthcare



Energy



Logistics



Industrial  
Manufacturing



Hospitality



Finance



## Awards

|

Clutch, an independent B2B rating platform that collects reviews from clients in the form of in-depth interviews, named us in their TOP 5 B2B Croatian companies for 2020. With an average grade of 4.9, we have been placed on the 5th place of this list and we have been given five out of five stars on our Clutch profile.

We are also is a proud winner of Deloitte Technology Fast 50 Central Europe award.

The Clutch logo features the word "Clutch" in a bold, dark blue sans-serif font. A small red dot is positioned above the letter 'h'.

2020 CLUTCH 5TH CROATIAN B2B COMPANY FOR 2020

The Deloitte logo consists of the word "Deloitte" in a bold, black sans-serif font, followed by a small green dot.

2015 DELOITTE TECHNOLOGY 50 CENTRAL EUROPE REWARD  
2016 DELOITTE TECHNOLOGY FAST 50 CENTRAL EUROPE REWARD  
2019 DELOITTE TECHNOLOGY FAST 500 EMEA 2019

# Selected Technologies



## **.NET framework related technologies:**

C#, .NET, ASP.NET WebForms, ASP.NET MVC, Entity Framework, ADO.NET, WPF, ASP.NET Web services, WCF services, .NET Core

## **Java platform related technologies:**

Java, JavaSE, JavaEE, Hibernate, Spring, Spring Boot, JSP, JSF, Struts, JSTL, Apache CXF, Jasper, Apache Karaf, Apache Kafka

## **PHP related technologies:**

PHP, Laravel

## **Python related technologies:**

Python, Django

## **Web technologies (front-end):**

HTML5, CSS3, Bootstrap, Material Design, JavaScript, jQuery, Angular, React, Redux

## **JavaScript related technologies (server-side):**

Node.js

## **Software testing technologies:**

xUnit.net, NUnit, Microsoft Test Manager, SpecFlow, JUnit, Mockito, JMeter, Selenium, Protractor, Jasmine, Karma

## **Software development technologies:**

Redis, RabbitMQ, Liquibase

## **Software development tools:**

Fiddler, Wireshark

## **Software development process related technologies:**

TFS, SVN, Git, GitLab, GitHub, Jenkins, Maven, Gradle, Visual Studio, Eclipse, IntelliJ IDEA, Visual Studio Code, JIRA  
RDBMS: IBM DB2, Microsoft SQL Server (T-SQL; SQL Server Management Studio), Oracle (PL/SQL; TOAD), PostgreSQL, MySQL.

## **Embedded software technologies:**

C++, STL, Qt, embedded Linux (Yocto, BitBake)

## **Cloud technologies:**

AWS, Microsoft Azure, Google Cloud Engine, Pivotal Cloud Foundry

## **Container technologies:**

Docker, Kubernetes

## **NoSQL DBMSs:**

Apache Cassandra

## **Mobile application technologies:**

Android (Java), iOS (Objective-C), Apache Cordova (hybrid applications), Xamarin (C#; supports both Android and iOS), React Native (JavaScript)

**DWH tools:** Oracle Data Warehouse Builder, IBM InfoSphere Data Stage

**serengeti**  
software tech

Serengeti Ltd.

Zadarska 80 | Zagreb | Croatia | EU

[sales@serengetitech.com](mailto:sales@serengetitech.com)

[serengetitech.com](https://serengetitech.com)

